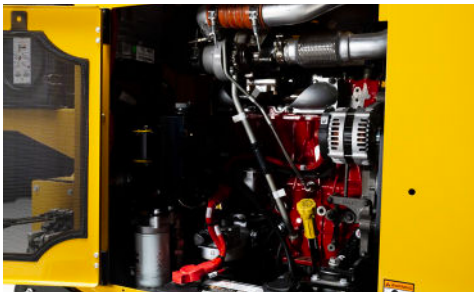


AX17 BRUSH CHIPPER



130-HP (96.9-KW) CUMMINS ENGINE. Powered by a Tier 3 Cummins engine, the AX17 brush chipper can handle tough materials with ease.



INTELLIGENT FEED SYSTEM. Providing over 6,500 lb (2,948 kg) of pull-in power, the AX17 uses Smartcrush and Smartfeed control system that reduces the need for operator interaction when feeding difficult material.



TRANSPORT FRIENDLY. The AX17 chassis is compliant with Australian Design Rules (ADR), thus facilitating ease of transportation around congested urban areas and minimizing the need for additional license requirements.



CLEAN-OUT DOOR. The AX17 is equipped with a side lever that provides convenient access when opening and closing the clean-out door.



COMMON CONTROL SYSTEM. Offers a common control system design with Australia controls such as a left-hand control panel, left-hand winch, left-hand chute and right-hand jack, allowing for straightforward functionality and ease of use.



ROBUST FEED TABLE. Mechanized feeding made effective with a wide feed roller opening and durable, fixed infeed table design.

AX17 BRUSH CHIPPER

GENERAL

Length (table down, tongue extended): 249.5 in (633.7 cm)

Width: 78.5 in (199.4 cm)

Height: 110.5 in (280.7 cm)

Weight: 8,640 lb (3,919 kg)

ENGINE

Make and model: Cummins 3.8 L T3

Number of cylinders: 4

Gross horsepower (max): 130 hp (96.9 kW)

Fuel type: Diesel

Cooling system: Liquid

Maximum torque: 488.1 Nm

FEED SYSTEM

Chipping capacity: 11.8 in (30 cm)

Infeed opening height: 29 in (73.7 cm)

Infeed opening width: 59.5 in (151.1 cm)

Feed roller orientation: Horizontal

Feed table height: 30 in (76.2 cm)

Feed speed (max): 95 fpm (29 m/min)

Upper feed roller dimension: 15 in x 20 in (38.1 cm x 50.8 cm)

Lower feed roller dimension: 11 in x 20 in (27.9 cm x 50.8 cm)

CUTTING SYSTEM

Drum speed: 1,800 rpm

Drum dimensions: 26 in x 20 in (66 cm x 50.8 cm)

Drum thickness: 0.5 in (1.3 in)

Number of knives: 2 - 5 in x 10 in x 0.6 in (12.7 cm x 25.4 cm x 1.6 cm)

Engagement system: Manual, automotive-style, self-adjusting clutch

Shear bar: 4-sided - 3 in x 20.3 in x 1.3 in (7.6 cm x 51.4 cm x 3.2 cm)

CAPACITIES/ELECTRICAL

Fuel tank capacity: 40 gal (151.4 L)

Hydraulic tank: 3 gal (11.4 L)

Max hydraulic flow: 6 gpm (22.7 L/min)

Lights: LED front, rear, side, brake and taillights

CHASSIS/BRAKES

Frame: Z channel, 0.3 in (0.6 cm) thick

Tires: 235/75R17.6

Axle/suspension: 10,000 lb (4,536 kg) torsion

Hitch: 3 in (7.6 cm) ID pintle

Tongue extension: 12 in (30.5 cm)

DISCHARGE SYSTEM

Discharge height: 110.5 in (280.67 cm)

Degree of rotation: 270°

OPTIONAL WINCH

Winch length: 151 ft (46 m)

Winch input speed: 48 rpm

Winch line pull: 2,000 lb (907.18 kg)

OPTIONS

Special paint

Extended warranty

Preventative maintenance

Adjustable height discharge chute

Remote control

Hydraulic chute controls

Hydraulic jack

Hydraulic outriggers

Vermeer Corporation reserves the right to make changes in engineering, design and specifications; add improvements; or discontinue manufacturing at any time without notice or obligation. Equipment shown is for illustrative purposes only and may display optional accessories or components specific to their global region. Please contact your local Vermeer dealer for more information on machine specifications. Vermeer, the Vermeer logo and Equipped to Do More are trademarks of Vermeer Manufacturing Company in the U.S. and/or other countries. Dongfeng Cummins is a trademark of Cummins Engine Company, Inc © 2025 Vermeer Corporation. All Rights Reserved. Printed in the U.S.A. Please recycle.

Vermeer



EQUIPPED TO
DO MORE.