

# TG5000 TUB GRINDER



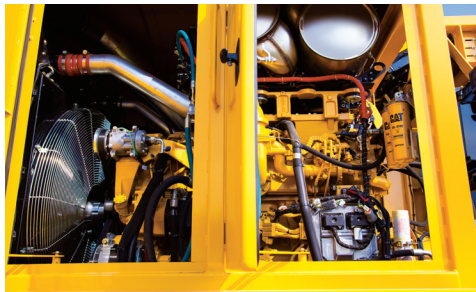
**OPTIMAL CUTTING PERFORMANCE.** The new Series III duplex drum is built off the proven cutting performance of previous Vermeer duplex drum designs, and makes maintenance more convenient with enhancements such as an independently secured wedge system and enhanced drum balancing.



**JOB EFFICIENCY.** An optional loader cab with grapple increases efficiency and can lift up to 3500 lb (1587.6 kg) at full reach.



**CONTROL IN YOUR HANDS.** The loader's electric-over-hydraulic controls provide the flexibility for an operator to use their preferred control configuration (Vermeer, SAE or ISO), as well as three operating modes with varying joystick sensitivity to meet the operator's needs.



**ENGINE POWER.** The TG5000 is powered by a 540 hp (403 kW) Caterpillar C15 Tier 4 Final engine. A Tier 3 engine option is available for lesser-emission regulated countries.



**JOBSITE SAFETY.** The patented Thrown Object Restraint System (TORS) reduces the amount and distance of thrown objects, and has a smooth underside for better material flow.



**OPERATING EFFICIENCY.** With features such as a hydraulically driven variable flow and reversing Flexaire cooling fan, the TG5000 is built with operating efficiency top of mind. The fan adjusts the pitch of the blades based on temperature, which can increase the power available to the mill for better processing efficiency.

# TG5000 TUB GRINDER

## GENERAL DIMENSIONS (NON-LOADER)

Max transport length: 39.2' (11.9 m)

Max transport width: 8.4' (2.6 m)

Max transport height: 157" (398.8 cm)

Weight — tandem axle: 51,000 lb (23,133.2 kg)

Weight — triple axle: 53,000 lb (24,040.4 kg)

## GENERAL DIMENSIONS (LOADER)

Max transport length: 45.5' (13.9 m)

Max transport width: 8.4' (2.6 m)

Max transport height: 162" (411.5 cm)

Weight: 68,000 lb (30,844.3 kg)

## ENGINE OPTION ONE

Make and model: CAT C15 Tier 4 Final turbocharged after-cooled

Max gross horsepower: 540 hp (403 kW)

Fuel tank capacity: 251 gal (950.1 L)

## ENGINE OPTION TWO

Make and model: CAT C15 Tier 3 turbocharged after-cooled

Max gross horsepower: 540 hp (403 kW)

Fuel tank capacity: 195 gal (738.2 L)

## FEED SYSTEM

Inside diameter of tub: 7.8' (2.4 m)

Inside flare diameter (at tub opening): 12.3' (3.7 m)

Depth of tub: 5' (1.5 m)

## SCREENS

Screen dimensions: 47" x 29" x .75" (119.4 cm x 73.7 cm x 1.9 cm)

Screen area: 2700 sq in (17,419.3 sq cm)

## SERIES III DUPLEX DRUM

Millbox opening: 23" x 49" (58.4 cm x 124.5 cm)

Number of hammers: 7

Number of tips: 14

## DISCHARGE SYSTEM — SINGLE BELT DESIGN

Belt width: 36" (91.4 cm)

Belt design — standard: 3-ply 330# with V-cleat

## CONTROLS

Stationary controls: LCD multifunction

Radio remote control: Multifunction with built-in LCD display, max 300' (91.4 m) operating range

## AXLE/SUSPENSION

Axle type — option one: Tandem axle over-slung spring suspension (non-loader)

Axle type — option two: Triple axle over-slung spring suspension (non-loader and loader)

## OPTIONAL LOADER

Max loader reach: 27' (8.2 m)

Loader lift capacity at full reach: 3500 lb (1587.6 kg)

Loader lift capacity at 10' (3.1 m): 12,250 lb (5556.5 kg)

Grapple type: Multiple tine, 360° rotation

## OPTIONS

Air compressor — 13 hp (10 kW) Honda

Special paint

Extended warranty

Preventive maintenance

Vermeer Confidence Plus® asset protection program

Work light package

Heavy duty belt